



5 Cobden Terrace, Crookes, Sheffield, S10 1HN

Saxton Mee



# 5 Cobden Terrace

## Crookes

Offers Around

**£325,000**

A beautifully presented three bedroom mid terrace property which has the benefit of a lovely long garden and two off road parking spaces! This fabulous home has been lovingly maintained by the owners and has the benefit of a fabulous seating area with tiled area to the front.

This well presented property briefly comprises:

Fitted dining kitchen with a range of base, drawer and wall units with plenty of space for family dining table. A staircase from here provides access into the cellar which provides additional storage space.

To the first floor there is a great size master bedroom, a second good size single bedroom and a family bathroom. A further staircase rises providing access to the attic bedroom three.

To the rear of the property is a delightful long back garden with patio area, lawn and has a range of mature shrubs and trees. At the end of the garden there are two off road parking spaces which area accessed off of Cobden View Road.

Located in the heart of Crookes, this lovely family home would make an ideal purchase for young first time buyers or professionals.

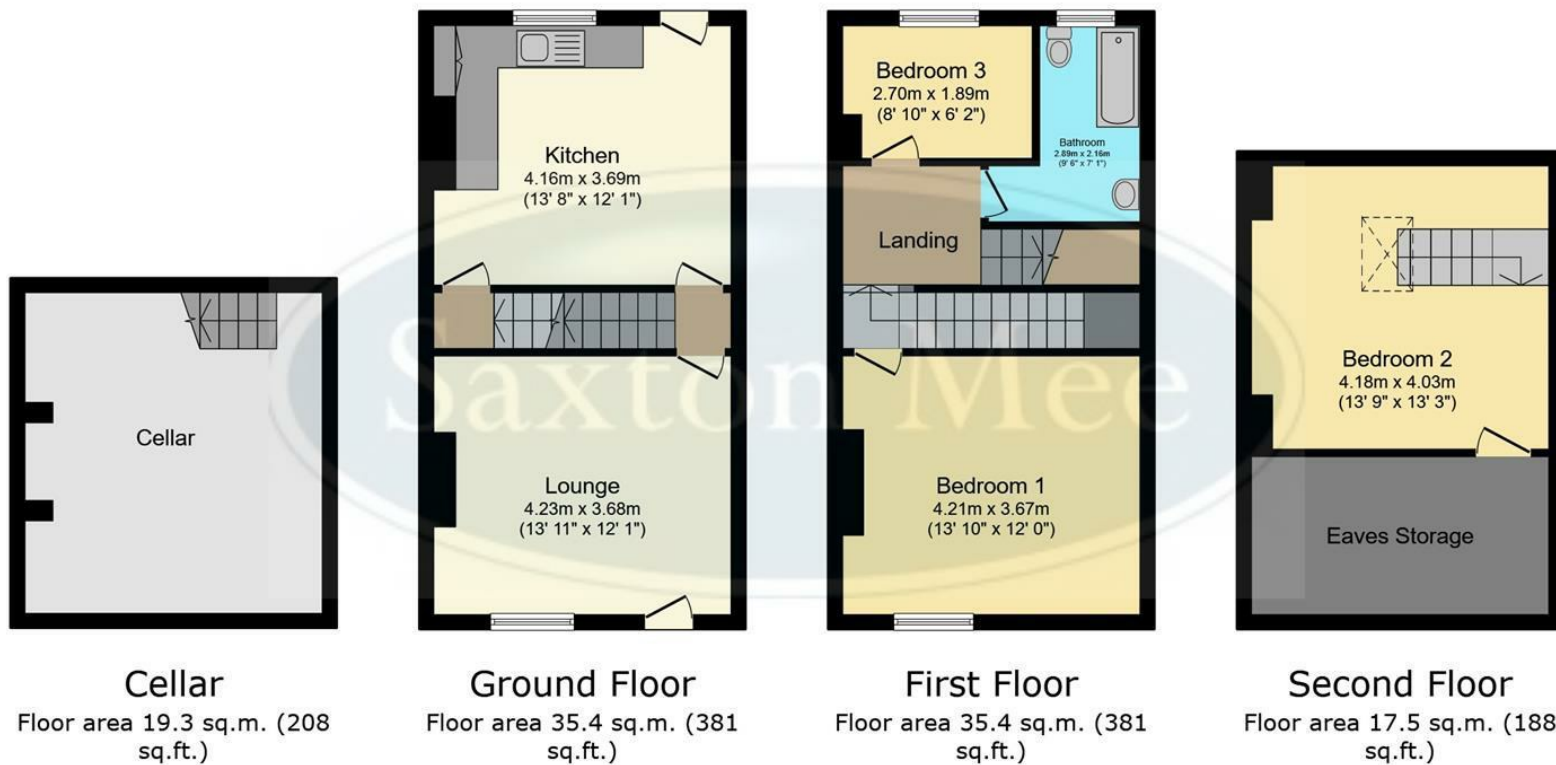


- Beautifully presented three bedroom terrace house
- Two off road parking spaces
- Lovely long garden with lawn and patio area
- Good size dining kitchen with fitted units and access to cellar storage
- Spacious master bedroom
- Modern bathroom
- Attic bedroom with velux window
- EPC Rating: D
- Council Tax Band: A
- Viewings via Saxton Mee Banner Cross









**Total floor area: 107.6 sq.m. (1,158 sq.ft.)**

This floor plan is for illustrative purposes only. It is not drawn to scale. Any measurements, floor areas (including any total floor area), openings and orientations are approximate. No details are guaranteed, they cannot be relied upon for any purpose and do not form any part of any agreement. No liability is taken for any error, omission or misstatement. A party must rely upon its own inspection(s). Powered by [www.Propertybox.io](http://www.Propertybox.io)

While we endeavour to make our sales particulars fair, accurate and reliable, they are only a general guide to the property and, accordingly, if there is any point, which is of particular importance to you, please contact the relevant office. The Agents have not tested any apparatus, equipment, fittings or services and so cannot verify they are in working order. The buyer is advised to obtain verification. Please note all the measurement details are approximate and should not be relied upon as exact. All plans, floor plans and maps are for guidance purposes only and are not to scale. Under no circumstances should they be relied upon as exact or for use in planning carpets and other such fixtures, fittings or furnishings. YOUR HOME IS AT RISK IF YOU DO NOT KEEP UP REPAYMENTS ON A MORTGAGE OR OTHER LOAN SECURED ON IT. 'A Life Assurance policy may be requested.' 'Written Quotations of credit terms available on request.'

**Banner Cross**  
T: 0114 268 3241  
E: [bannercross@saxtonmee.co.uk](mailto:bannercross@saxtonmee.co.uk)  
[www.saxtonmee.co.uk](http://www.saxtonmee.co.uk)

**Hathersage**  
T: 01433 650009  
E: [hathersage@saxtonmee.co.uk](mailto:hathersage@saxtonmee.co.uk)

**Bakewell**  
T: 01629 815307  
E: [bakewell@saxtonmee.co.uk](mailto:bakewell@saxtonmee.co.uk)

**Matlock**  
T: 01629 828250  
E: [matlock@saxtonmee.co.uk](mailto:matlock@saxtonmee.co.uk)

